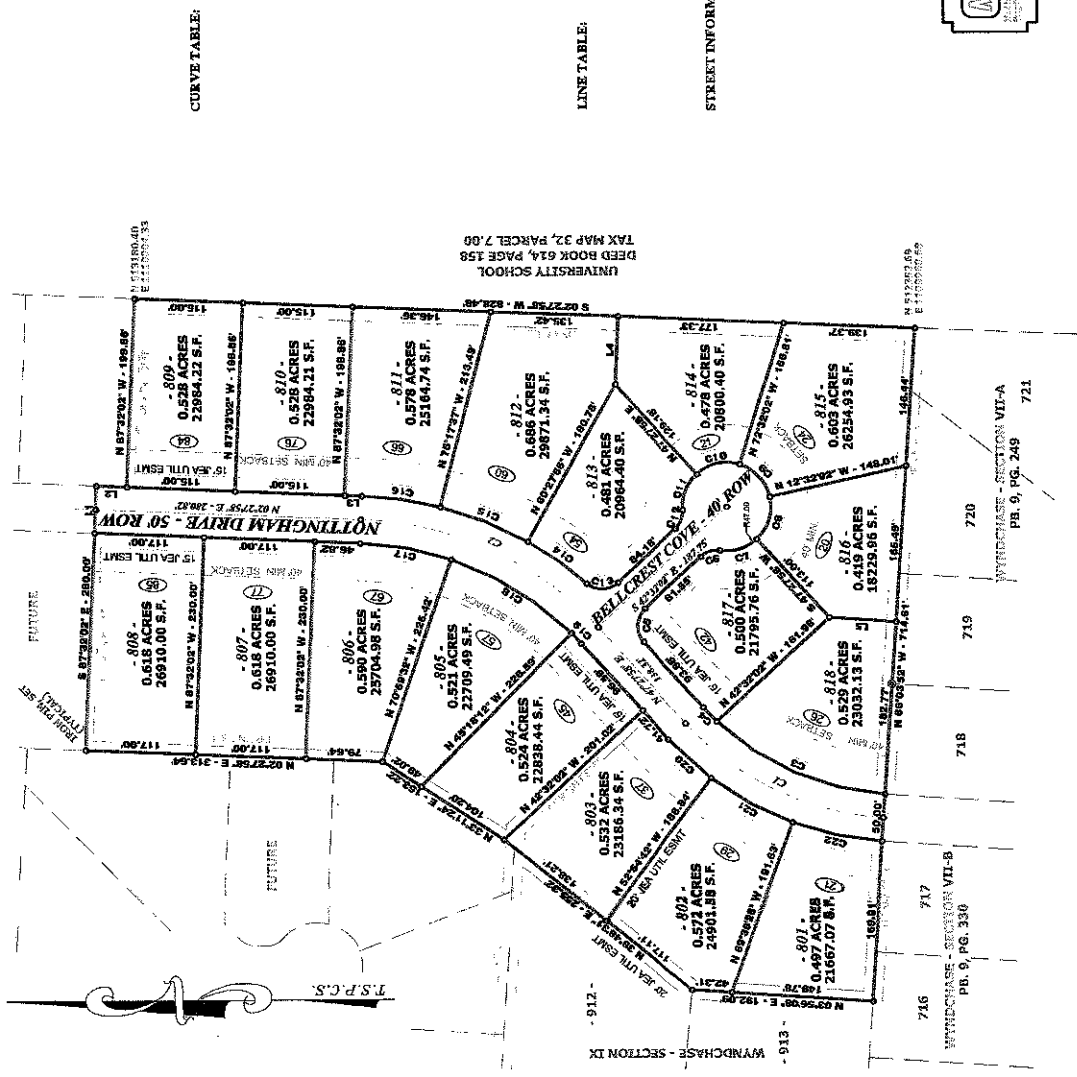


FINAL PLAT
WYNDCHASE SUBDIVISION
SECTION VIII

JACKSON, MADISON COUNTY, TENNESSEE
 TAX MAP NO. 32, PARCEL NO. B.C. 8.25 (PORTION),
 ZONED: RS (SINGLE FAMILY RESIDENTIAL DISTRICT)
 PHASE: "A" - .215 - 11.5 ACRES

jacksonlotsales.com



CURVE TABLE:

LINE TABLE:

STREET INFORMATION TABLE:

UNIVERSITY SCHOOL
 DEED BOOK 614, PAGE 158
 TAX MAP 32, PARCEL 7.00

WYNDCHASE - SECTION VII-A
 PG. 9, PG. 249 721

WYNDCHASE - SECTION VII-B
 PG. 9, PG. 330 716

WYNDCHASE - SECTION VII-C
 PG. 9, PG. 330 717

WYNDCHASE - SECTION IX
 PG. 9, PG. 330 718

WYNDCHASE - SECTION VII-A
 PG. 9, PG. 249 720

WYNDCHASE - SECTION VII-B
 PG. 9, PG. 330 719

WYNDCHASE - SECTION VII-C
 PG. 9, PG. 330 721

T.S.P.C.S.